

SHIP DETAIL

Ship Name	HORIZON ARMONIA	Shiptype	Chemical/Products Tanker
IMO/LR No.	9407354	Gross	29,828
Call Sign	A8QI9	Deadweight	50,326
MMSI No.	636013938	Year of Build	2008
Flag	Liberia	Status	In Service/Commission
Operator	Cargill International SA	Shipbuilder	SPP Shipbuilding - Tong...



OWNERSHIP

Group Owner	Target Marine SA	Address Location	Panama	Company No.	1315070
Shipmanager	Horizon Tankers Ltd SA	Address Location	Greece	Company No.	5320473
Operator	Cargill International SA	Address Location	Switzerland	Company No.	1226521
DOC Company	V Ships UK Ltd	Address Location	United Kingdom	IMO Company No (DOC)	0758614
Registered Owner	Boyero Shipping Ltd	Address Location	Greece	IMO Registered Owner No	4139318
Technical Manager	V Ships UK Ltd	Address Location	United Kingdom	Company No.	0758614
Bareboat Owner		Address Location		Company No.	

COMMERCIAL HISTORY

☐ Show extended history

Date	Name	Flag	Group Owner	Operator	Manager	Registered Owner	DOC	Price
2013-02				Cargill International SA				
2008-07	HORIZON ARMONIA	Liberia		Horizon Tankers Ltd SA	Horizon Tankers Ltd SA	Boyero Shipping Ltd	V Ships UK Ltd	
2006-08			Target Marine SA					

Originally HORIZON ARMONIA;Newbuilding price \$47,000,000

REGISTRATION, P&I, AND COMMUNICATIONS

Port of Registry	Monrovia	Flag	Liberia
Official Number	13938	Sat Com ID	
Sat Com Ans Back		Fishing Number	
Current P&I Club	GARD AS		

P&I Club History

Date	P&I Club
2018-03-07	GARD AS
2014-12-03	SKULD
2009-12-08	SKULD

Date	Flag	Call Sign	MMSI
2008-07	Liberia	A8QI9	636013938

CLASS

Class: American Bureau of Shipping (IACS) (2008-07-00), Class ID: 08179907 AB: Special Survey Date: 2018-11-21 Class Notation: (+)A1, Chemical Carrier, Oil Carrier, ESP, (+)AMS, (+)ACCU, FL 30, CSR AB-CM, POT, RRDA, VEC-L, UWILD, TCM, CRC, RES, CPP, RW Service Restriction: Unrestricted Service

Class History

Date	Class	Status
2008-06-00	American Bureau of Shipping (IACS)	(Contemplated)

SURVEYS

Special Survey Due 2023-07-09, Assigned 2018-11-21, American Bureau of Shipping
Docking Survey Due 2021-11-20, Assigned 2018-11-21, American Bureau of Shipping

CONSTRUCTION OVERVIEW

ALTERATIONS & CONVERSIONS

ARRANGEMENT

Structure	Sequence (Bow to Stern)	Position	Type	Material	Length	Breadth
Tank	01	Cargo Tank	Port	Steel (Unspecified)		
Tank	02	Cargo Tank	Starboard	Steel (Unspecified)		
Tank	03	Cargo Tank	Port	Steel (Unspecified)		
Tank	04	Cargo Tank	Starboard	Steel (Unspecified)		
Tank	05	Cargo Tank	Port	Steel (Unspecified)		
Tank	06	Cargo Tank	Starboard	Steel (Unspecified)		
Tank	07	Cargo Tank	Port	Steel (Unspecified)		
Tank	08	Cargo Tank	Starboard	Steel (Unspecified)		
Tank	09	Cargo Tank	Port	Steel (Unspecified)		
Tank	10	Cargo Tank	Starboard	Steel (Unspecified)		
Tank	11	Cargo Tank	Port	Steel (Unspecified)		
Tank	12	Cargo Tank	Starboard	Steel (Unspecified)		
Tank	13	Slop Tank	Port	Steel (Unspecified)		
Tank	14	Slop Tank	Starboard	Steel (Unspecified)		

CONSTRUCTION DETAIL

Statcode5:A12B2TR; Ship Type Group:Tanker-MR2; Hull Type:Double Hull (Marpol); Hull Material:Steel; IMO Chemical Class III; Hull Connections:Welded; Decks:1 dk; Bulbous bow

SERVICE CONSTRAINTS

Trading, Commercial; Sea, Unspecified

SHIP BUILDER

2008-07 SPP Shipbuilding Co Ltd - Tongyeong Yard/hull No.: H1015

SISTER SHIPS

At most, the first fifty sister ships are returned. Click [here](#) to return all sister ships into Search Results.

LRNO	Ship Name	Status	Deadweight	GT	Built	Type	Yard No	Main Engine
9428683	ADAMAS I	IN SERVICE/COMMISSION	50122	29924	2009-04	Chemical/Products Tanker	S1032	6S50MC-C
9337315	AG MARS	IN SERVICE/COMMISSION	50546	30042	2006-11	Chemical/Products Tanker	H1002	7RTA48T-B
9396725	ALNIC MC	IN SERVICE/COMMISSION	50760	30040	2008-04	Chemical/Products Tanker	H1013	6S50MC-C
9478705	ALPINE LEGEND	IN SERVICE/COMMISSION	50223	29826	2010-07	Chemical/Products Tanker	H1034	6S50MC-C
9478690	ALPINE LIBERTY	IN SERVICE/COMMISSION	50223	29826	2010-03	Chemical/Products Tanker	H1028	6S50MC-C
9478717	ALPINE LIGHT	IN SERVICE/COMMISSION	50238	29826	2010-10	Chemical/Products Tanker	H1035	6S50MC-C
9478614	ALPINE LINK	IN SERVICE/COMMISSION	50209	29826	2010-01	Chemical/Products Tanker	H1026	6S50MC-C
9457713	ALPINE MAGNOLIA	IN SERVICE/COMMISSION	50275	29826	2009-05	Chemical/Products Tanker	H1025	6S50MC-C
9478688	ALPINE MEADOW	IN SERVICE/COMMISSION	50171	29826	2010-03	Chemical/Products Tanker	H1027	6S50MC-C
9396713	AQUADISIAC	IN SERVICE/COMMISSION	50695	30040	2008-01	Chemical/Products Tanker	S1010	6S50MC-C
9516222	ARENDAL	IN SERVICE/COMMISSION	49999	29832	2010-01	Chemical/Products Tanker	S5075	6S50MC-C
9457385	ASTIR LADY	IN SERVICE/COMMISSION	50286	30043	2011-04	Chemical/Products Tanker	S5050	6S50MC-C
9391294	BICENTENARIO	IN SERVICE/COMMISSION	50537	29832	2008-08	Chemical/Products Tanker	S1017	6S50MC-C
9362372	BRIGHT DAWN	IN SERVICE/COMMISSION	50605	30042	2007-03	Chemical/Products Tanker	H1005	7RTA48T-B
9365386	DL COSMOS	IN SERVICE/COMMISSION	49995	29990	2007-09	Chemical/Products Tanker	H1008	7RTA48T-B
9365374	DL ROSE	IN SERVICE/COMMISSION	49997	29990	2007-07	Chemical/Products Tanker	H1007	7RTA48T-B
9396749	ELANDRA BLU	IN SERVICE/COMMISSION	50695	30066	2008-07	Chemical/Products Tanker	H1016	6S50MC-C
9396751	ELANDRA CORALLO	IN SERVICE/COMMISSION	50607	30150	2008-10	Chemical/Products Tanker	H1018	6S50MC-C
9397781	GALISSAS	IN SERVICE/COMMISSION	50057	29924	2008-12	Chemical/Products Tanker	S1015	6S50MC-C
9399894	GERAKAS	IN SERVICE/COMMISSION	49997	30040	2009-06	Chemical/Products Tanker	S1004	6S50MC-C
9391531	GRAND	IN SERVICE/COMMISSION	50129	29995	2008-11	Chemical/Products Tanker	S1014	6S50MC-C

9407366	HORIZON APHRODITE	IN SERVICE/COMMISSION	50236	29828	2008-09	Chemical/Products Tanker	H1017	6S50MC-C
9407354	HORIZON ARMONIA	IN SERVICE/COMMISSION	50326	29828	2008-07	Chemical/Products Tanker	H1015	6S50MC-C
9407378	HORIZON ATHENA	IN SERVICE/COMMISSION	50242	29828	2008-12	Chemical/Products Tanker	H1019	6S50MC-C
9407392	HORIZON THEANO	IN SERVICE/COMMISSION	50268	29828	2009-05	Chemical/Products Tanker	H1023	6S50MC-C
9407407	HORIZON THEONI	IN SERVICE/COMMISSION	50221	29828	2009-06	Chemical/Products Tanker	H1024	6S50MC-C
9407380	HORIZON THETIS	IN SERVICE/COMMISSION	50326	29828	2009-01	Chemical/Products Tanker	H1020	6S50MC-C
9396737	ISOLA BIANCA	IN SERVICE/COMMISSION	50927	30040	2008-05	Chemical/Products Tanker	H1014	6S50MC-C
9396787	ISOLA CELESTE	IN SERVICE/COMMISSION	50554	30123	2008-07	Chemical/Products Tanker	S1021	6S50MC-C
9516258	KOURION	IN SERVICE/COMMISSION	49996	29930	2012-10	Chemical/Products Tanker	S5079	6S50MC-C
9391311	KRITI JADE	IN SERVICE/COMMISSION	50564	29832	2008-10	Chemical/Products Tanker	S1019	6S50MC-C
9391282	KRITI RUBY	IN SERVICE/COMMISSION	50349	29832	2008-07	Chemical/Products Tanker	S1016	6S50MC-C
9396488	LARA	IN SERVICE/COMMISSION	50655	30120	2007-11	Chemical/Products Tanker	S1009	6S50MC-C
9399882	LEFKARA	IN SERVICE/COMMISSION	49996	30040	2008-09	Chemical/Products Tanker	S1003	6S50MC-C
9418121	MARIOS G	IN SERVICE/COMMISSION	50747	30075	2010-02	Chemical/Products Tanker	S1030	6S50MC-C
9428384	MR ORESTES	IN SERVICE/COMMISSION	50106	30006	2009-08	Chemical/Products Tanker	S1033	6S50MC-C
9428334	MR PAT BROWN	IN SERVICE/COMMISSION	50096	30006	2009-02	Chemical/Products Tanker	S1025	6S50MC-C
9428346	MR PEGASUS	IN SERVICE/COMMISSION	50070	30006	2009-02	Chemical/Products Tanker	S1026	6S50MC-C
9399923	NAVE EQUATOR	IN SERVICE/COMMISSION	49999	30083	2009-09	Chemical/Products Tanker	S1007	6S50MC-C
9399935	NAVE ORBIT	IN SERVICE/COMMISSION	49999	30083	2009-10	Chemical/Products Tanker	S1008	6S50MC-C
9418145	NAVIG8 STRENGTH	IN SERVICE/COMMISSION	50497	30075	2009-09	Chemical/Products Tanker	S1035	6S50MC-C
9418133	NAVIG8 SUCCESS	IN SERVICE/COMMISSION	50571	30075	2009-09	Chemical/Products Tanker	S1034	6S50MC-C
9365362	NEW DAWN	IN SERVICE/COMMISSION	50561	30042	2007-05	Chemical/Products Tanker	H1006	7RTA48T-B
9428372	NORD PEARL	IN SERVICE/COMMISSION	50078	30045	2009-05	Chemical/Products Tanker	S1031	6S50MC-C
9391529	OCEAN BREEZE	IN SERVICE/COMMISSION	50748	30075	2008-05	Chemical/Products Tanker	S1013	6S50MC-C
9391517	OCEAN PRINCESS I	IN SERVICE/COMMISSION	50549	30075	2008-03	Chemical/Products Tanker	S1011	6S50MC-C
9399909	OMODOS	IN SERVICE/COMMISSION	50521	30040	2009-07	Chemical/Products Tanker	S1005	6S50MC-C
9399868	ORIENTAL DIAMOND	IN SERVICE/COMMISSION	50323	30110	2008-04	Chemical/Products Tanker	S1001	6S50MC-C
9399870	ORIENTAL GOLD	IN SERVICE/COMMISSION	50591	30110	2008-06	Chemical/Products Tanker	S1002	6S50MC-C
9399911	PLOVER PACIFIC	IN SERVICE/COMMISSION	50577	30083	2009-12	Chemical/Products Tanker	S1006	6S50MC-C

STATUS

Date	Status
2008-07-10	In Service/Commission
2008-05-02	Launched
2008-01-29	Keel Laid
2006-08-11	On Order/Not Commenced

SUPPLEMENTARY FEATURES

Feature
CSR
ESP
IWS

Field	Value
Fuel Consumption Speed - Current Value	14.90
Total Fuel Consumption - Current Value	32.63
Total fuel capacity, in cubic metres	1383.00
Boiler Manufacturer	Alfa Laval Aalborg
Propeller Manufacturer	Silla Metal

DIMENSIONS

Length Overall	183.090	Length (BP)	174.000
Length (Reg)	175.540	Bulbous Bow	Yes
Breadth Extreme	32.232	Breadth Moulded	32.200
Draught	13.076	Depth	19.100
Keel to Mast Height	46.363		
Displacement	60972	T/CM	52.0

See also Specialist in Cargo & Gear for tanker specific dimensions

TONNAGES

Tonnage Type	One tonnage, unspecified	Tonnage System	New System (International 1969)
Effective Date	2008-07	Effective Date	2008-07
Gross Tonnage (GT)	29,828	Net Tonnage (NT)	13,429
Deadweight (DWT)	50,326	Compensated Gross Tonnage (CGT)	0
Formula Deadweight	47,240	Light Displacement Tonnage (LDT)	10,646

CARGO OVERVIEW

Grain	0	Bale	0	Liquid	52,103	Gas	0
TEU	0	TEU 14t	0	Insulated	0		

CAPACITIES

Liquid @ 98% 52,103; Segregated Ballast 23,027; Slops 1,401

CARGO HANDLING GEAR

Cargo Pumps 12 @ 600 M3/hr

COMPARTMENTS

HATCHES

RO-RO (LANES, RAMPS & DOORS)

SPECIALIST

COW, IGS, SBT (Protective), Closed Loading, VRS - Vapour Recovery System, Slop Capacity **1,401**, Deck Heat Exchangers, Stainless Steel Deck Heat Exchangers, 66 Maximum Temp (Centigrade), SPM Equipped, 1 Tongue Bow Stoppers, 200t SWL, Flash Point Under 60c, 7 Lines (manifolds) per Side, **33.35m** Mid Point Manifold Forward (Light), **63.88m** Parallel Body Length (Light), **30.53m** Mid Point Manifold Aft (Light), **47.55m** Mid Point Manifold Forward (Ballast), **90.84m** Parallel Body Length (Ballast), **43.29m** Mid Point Manifold Aft (Ballast), **59.45m** Mid Point Manifold Forward (Laden), **102.74m** Parallel Body Length (Laden), **43.28m** Mid Point Manifold Aft (Laden), **91.18m** Bow to Centre Manifold, **0.350m** Manifold Discharge Diameter

TANKS

6 Steel (Unspecified) Port Cargo Tank(s), 6 Steel (Unspecified) Starboard Cargo Tank(s), 1 Steel (Unspecified) Port Slop Tank(s), 1 Steel (Unspecified) Starboard Slop Tank(s), 7 Grades (cargo segregations)

Type	Coating
Cargo Tank	Epoxy
Slop Tank	Epoxy

TOWAGE

MACHINERY OVERVIEW

1 oil engine driving 1 FP propeller at 127 rpm Total Power: Mcr 9,480kW (12,889hp)Service Speed: 14.90kts Speed & Consumption: 14.90 knots on 32.63 tonnes per day

AUXILIARY ENGINES

Design: Yanmar, **Engine Builder:** Yanmar
3 x 6N21AL-EV, 4 Stroke 6Cy.
210 x 290, Mcr: 970 kW

AUXILIARY GENERATORS

Aux Generator: 3 x 900kW 450V 60Hz a.c.

BOILERS

BUNKERS

Fuel:Capacity - Distillate Fuel: 113 cu m, Residual Fuel: 1,270 cu m

Consumption (t)	At Speed (kn)
32.63	14.90

PRIME MOVER DETAIL

Design: MAN-B&W, Engine Builder: Doosan Engine Co Ltd - South Korea

1 x 6S50MC-C, 2 Stroke, Single Acting, In-Line (Vertical)

6 Cy. 500 x 2000, Mcr: 9,480 kW (12,889 hp) at 127 rpm

THRUSTERS

TRADING AREAS LAST 12 MONTHS

Caribbean

East Coast South America

Mediterranean

UK - Continent - Baltic

US East Coast

US Gulf

West Africa

AIS POSITION

To add this optional module to your subscription simply click here

BERTH CALLS

To add this optional module to your subscription simply click here

MOVEMENTS

To add this optional module to your subscription simply click here

CALLINGS CALENDAR

To add this optional module to your subscription simply click here

CALLINGS VISUALISATION

To add this optional module to your subscription simply click here

STS PAIRINGS

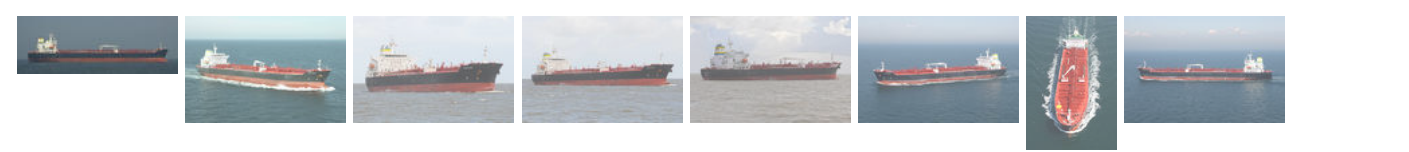
To add this optional module to your subscription simply click here

EVENT TIMELINE

Date	Significant Events
201811	SMC Certificate issued by Liberia Expires 20231125
201810	PSC Inspected
201809	PSC Inspected

201702	PSC Inspected
201407	PSC Inspected
201403	PSC Inspected
201312	PSC Inspected
201310	SMC Certificate issued by Liberia Expires 20181126
201304	PSC Inspected
201302	PSC Inspected, Operator Cargill International SA
201211	PSC Inspected
201209	PSC Inspected
201207	PSC Inspected, PSC Inspected
201204	PSC Inspected
201111	PSC Inspected
201105	PSC Inspected, PSC Inspected
201102	PSC Inspected
201010	PSC Inspected, PSC Inspected
201003	PSC Inspected
201001	PSC Inspected
200903	PSC Inspected
200811	PSC Inspected
200807	Name changed to HORIZON ARMONIA, Classed AB, Flagged by Liberia, PSC Inspected, Status changed to In Service/Commission, SMC Certificate issued by LIBERIA Expires 20090109, Operator Horizon Tankers Ltd SA, Operator Target Marine SA, Technical Manager V Ships UK Ltd, Owner Boyero Shipping Ltd, Ship Manager Target Marine SA, Ship Manager Horizon Tankers Ltd SA
200806	Contemplated AB
200805	Status changed to Launched
200801	Status changed to Keel Laid
200608	Status changed to On Order/Not Commenced, Group Owner Target Marine SA

PHOTOGRAPHS



[Play Slideshow](#)

[◀ Previous Photo](#) [Next Photo ▶](#)



EQUASIS

Photo Date: 2013-03-08

Copyright: E. Vroom



To view information available on Equasis for this vessel click on the button below.

[Equasis](#)

Equasis is a public web-site promoting quality shipping, and this access from Sea-web has the approval of the Equasis Secretariat.

INMARSAT

To view information available on the Inmarsat Ships Directory for this vessel, click on the button below.

[Inmarsat](#)

This link is by ship name, so please ensure that you are viewing the correct ship in the Directory. If you cannot see the ship you can search again directly in the Directory. Please note that the Directory displays each Inmarsat terminal separately for each ship.

© 2019 IHS Global Limited. IHS Global Limited assumes no responsibility and shall not be liable to any person for any loss, damage or expense caused by reliance on the information or advice in this document or howsoever provided, unless that person has a contract with IHS Global Limited and in that case any responsibility or liability is exclusively on the terms and conditions set out in that contract.